

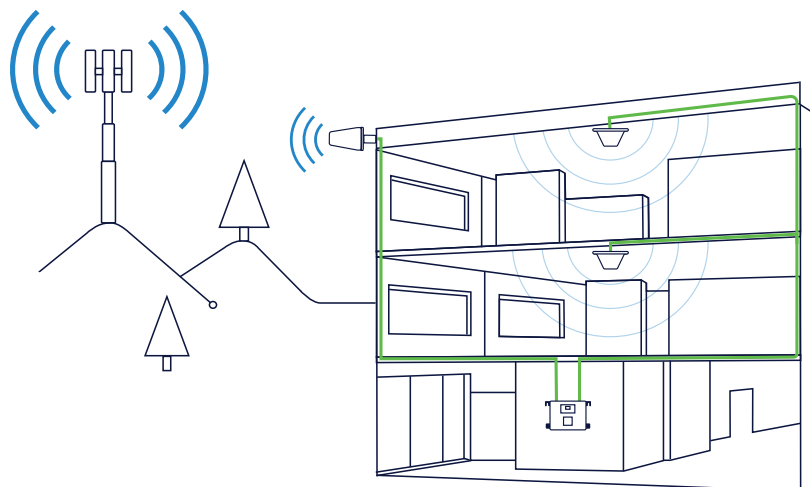
# Solving Cellular Connectivity Issues for Business

## ABOUT WILSONPRO | PROFESSIONAL-GRADE CELLULAR SIGNAL AMPLIFIERS

Whether it's manufacturing or healthcare, retail or hospitality, sales or management—or virtually any industry in between—mobile devices are critical to job performance at almost any organization.

WilsonPro offers commercial solutions for cellular signal enhancement. Our professional-grade amplifiers work with all major Canadian carrier networks to ensure you get the best signal possible.

Our ISED-approved WilsonPro systems are well-suited to overcome any connectivity challenges specific to your building—from an office high-rise to an industrial warehouse. Reliable cell signal can mean increased productivity, greater customer satisfaction, improved security, and much more.



## The key characteristics of WilsonPro cell signal amplifiers:

- Boost all current cell signals for data, voice, text.
- Support all mobile devices, all major Canadian carriers.
- Simultaneously boost signal for multiple users.<sup>1</sup>
- Self-regulating; no need to retune for best signal.
- Nationwide network of certified installers available.
- The nation's only ISED-certified in-line amplifier; featuring the longest cable run (without signal loss) in the entire industry.<sup>2</sup>
- Built in the U.S. and backed by U.S. customer support.
- The only true cloud-based remote monitored amplifier with remote system management, cell signal measurements, and firmware updates.<sup>3</sup>
- The industry's only multi-port output amplifier; resulting in the largest coverage area possible from a single amplifier.
- The only cell signal amplifiers to offer Multi-Tower Targeting (MTT) Technology; featuring our industry-first, three donor antenna port configuration.
- Our products are 5G ready - WilsonPro technology will continue to improve cell signal for the next decade and beyond in a 5G world.

## WilsonPro Product Comparison Guide

### EXTENDED CABLE RUNS SOLUTION: INLINE AMPLIFIER

NAME	RANGE SQ. FT.	SERVER PORTS	DONOR PORTS	UPLINK	DOWNLINK	CASE STYLE	RF CONNECTOR	NETWORK SCANNING	MTT	XDR	MODEL	MSRP
Pro 1050	< 35,000*	1 server port	1 donor port Also includes an inline amp with 1 server port/ 1 donor port	21 dBm	15 dBm	Wall Mount	50 Ohm 'N'	No	No	Yes	460230F	\$6,999.99

<sup>1</sup>Except the ProSignal 4G which connects directly to a single device.

<sup>2</sup>When using the WilsonPro 1050 and inline amplifier with 300' cable.

<sup>3</sup>Feature exclusive to Enterprise 1300/1300R and Enterprise 4300/4300R.

Looking for more information? Visit [wilsonpro.ca/training](http://wilsonpro.ca/training) to register for upcoming training events.

## WilsonPro Product Comparison Guide

### M2M/IOT SOLUTION

<b>IoT 2-Band</b>	Connects Directly	1 server port	1 donor port	15 dBm	-3 dBm	Wall Mount	50 Ohm SMA	No	No	No	460209F	\$279.99
<b>IoT 5-Band</b>	Connects Directly	1 server port	1 donor port	15 dBm	-3 dBm	Wall Mount	50 Ohm SMA	No	No	No	460119F	\$379.99
<b>IoT 5-Band Security Kit</b>	Connects Directly	1 server port	1 donor port	15 dBm	-3 dBm	Wall Mount	50 Ohm SMA	No	No	No	460219F	\$379.99

### REMOTE MONITORED AND MANAGED SOLUTIONS: WILSONPRO CLOUD

<b>Enterprise 1300</b>	<40,000*	1 server port	3 donor ports	26 dBm	17 dBm	Wall Mount	50 Ohm 'N'	No	Yes	Yes	460149F	\$6,499.99
<b>Enterprise 1300R</b>						Rack (2U)					460150F	
<b>Enterprise 4300</b>	< 100,000*	4 server ports	3 donor ports	26 dBm	17 dBm (per server port)	Wall Mount	50 Ohm 'N'	Yes	Yes	Yes	460152F	\$16,999.99
<b>Enterprise 4300R</b>						Rack (2U)					460153F	

\*Depending on outside signal conditions and inside antenna configuration.